



# Eat where the "locals" go!

Available

Available

Available

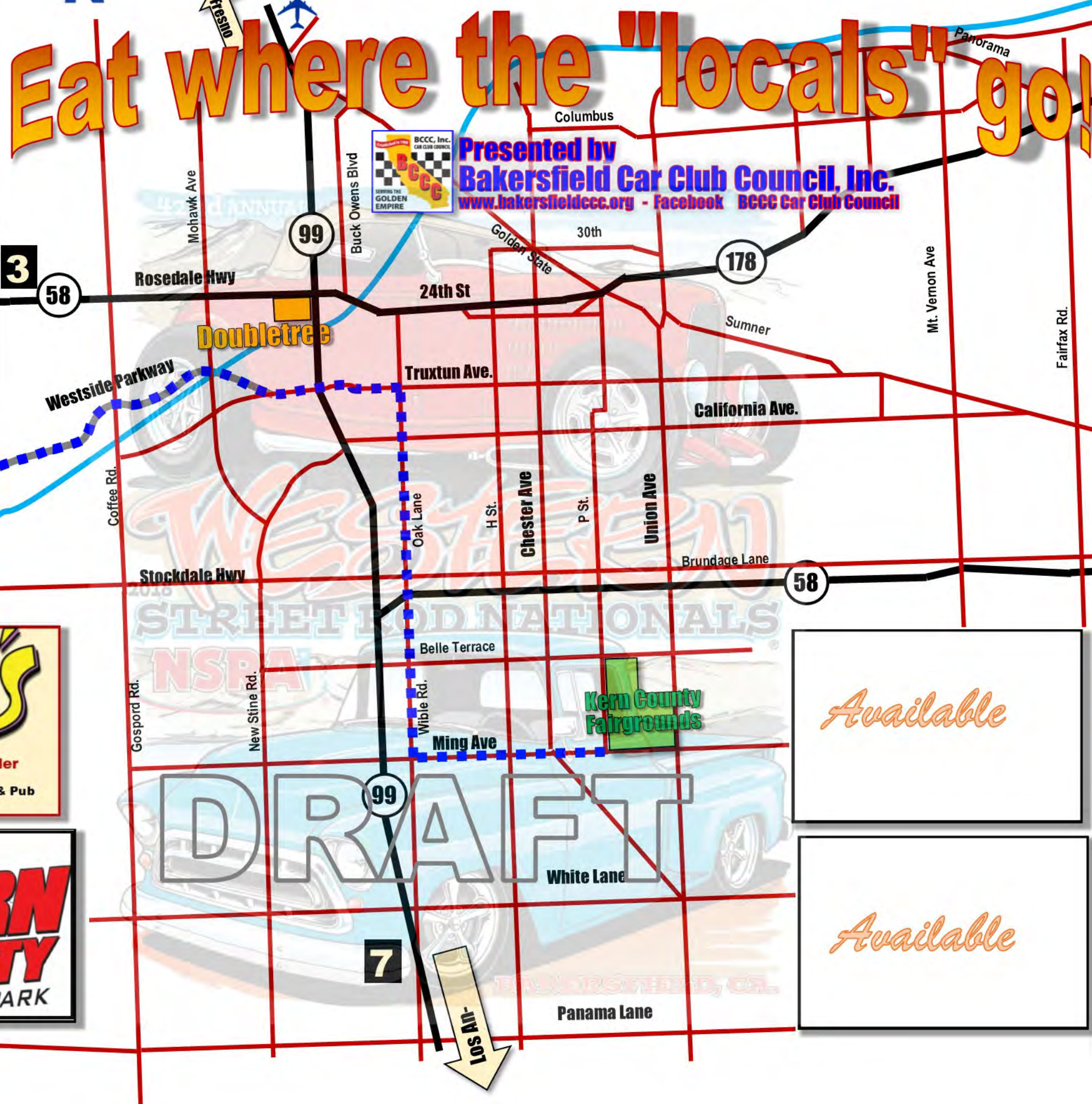


**Presented by  
Bakersfield Car Club Council, Inc.**  
[www.bakersfieldccc.org](http://www.bakersfieldccc.org) - Facebook BCCC Car Club Council

**Crest**  
BAR & GRILL  
at the  
Bakersfield R.V. Resort  
Crest Bar & Grill  
5025 Wible Rd.  
American, Bar & Pub

**7**

Super Cruise from  
Fairgrounds to  
Kern County  
Raceway Park  
19 miles  
each way.



Available

Available

Available

Available

Available

**CHUY'S**  
Since 1975  
Chuy's Mesquite Broiler  
8660 Rosedale Hwy  
Mexican, American, Bar & Pub

**3**

**KERN COUNTY**  
RACEWAY PARK

**5**

KC Raceway Park

**7**





**BCCC**  
*Serving Car Clubs throughout the Golden Empire*



**Super Cruise—Friday 4 PM  
 Kern County Raceway Park—  
 Visit Bakersfield—BCCC, Inc.**

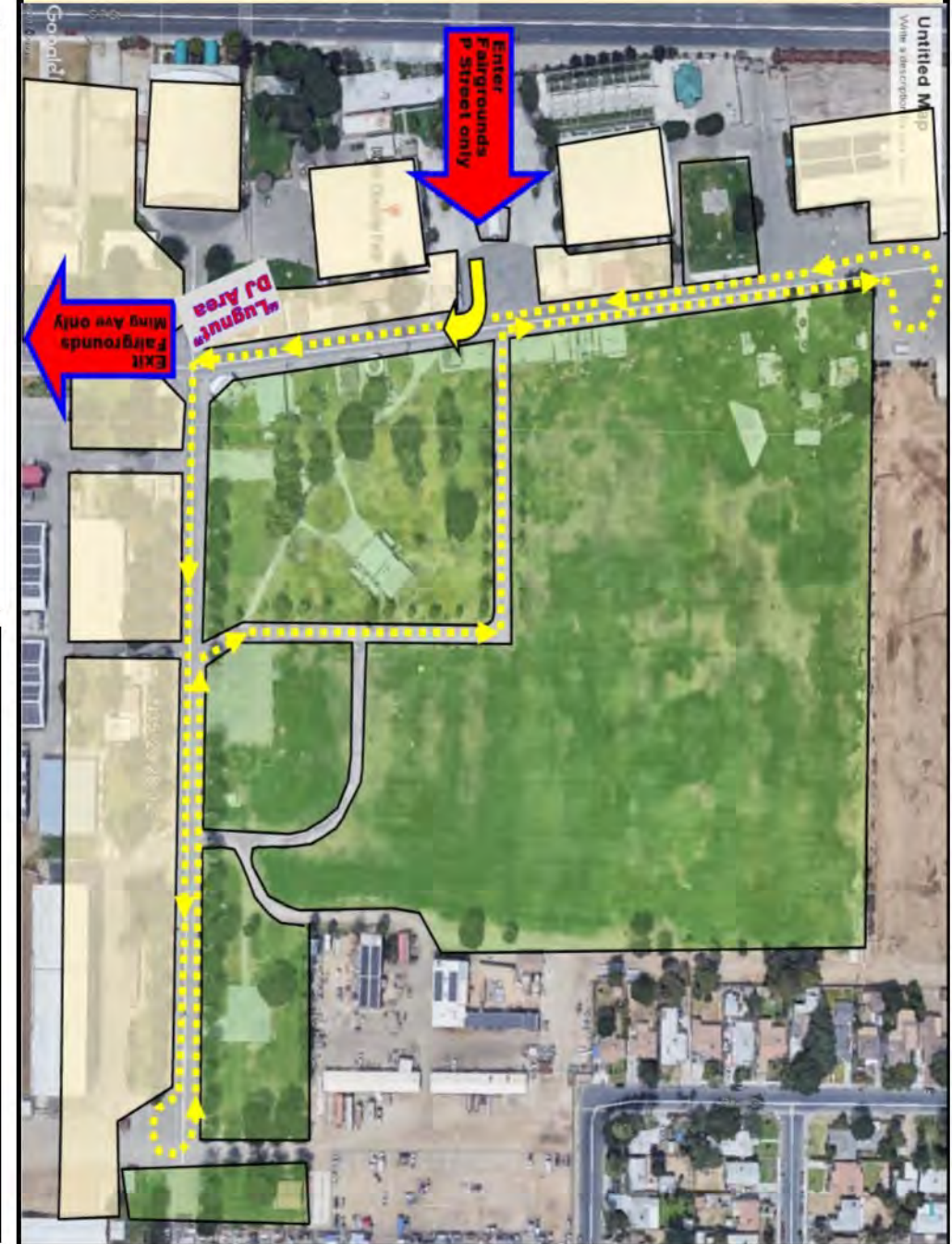


**NSRA Saturday 7 PM  
 KC Fairground Cruise**

Show map/directions to KCRP with info on Food and etc.

**Thursday Cruise-N-Dinner  
 CHUY'S - 4pm**

*Pre-Event meet up-Thursday, meet up where the locals go every Thursday nite to gather with friends, talk gearhead and hang out while grabbing some food. Open to all vehicles, no cost. This is hosted by Chuy's Mesquite Broiler on Rosedale every Thursday. Plenty of parking, for the early birds', (area is tapped off). Starts at 4pm ends around 8pm. Food options, restrooms, bottomless soft drinks and lots of gear-head talk. DJ, "Lugnut", with giveaways.*



**Continental Breakfast-7am  
 NSRA-Visit Bakersfield-OFCC**

*Continental Breakfast hosted by OFCC of Wasco and Bakersfield Car Club Council, Inc. (BCCC) starting at 7am till around 9am. Sponsored by Visit Bakersfield, (formerly Bakersfield Convention & Visitors Bureau). We will have donuts, coffee and OJ as long as it lasts. Come see us at the Budweiser Pavilion at KC Fairgrounds-look for the polished Airstream Classic Motorhome.*